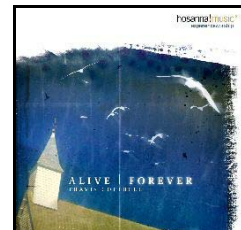




Friend Of God

Words & music by Israel Houghton
and Michael Gungor

Arranged by Arranged by Ed Hogan



Send Email to:

feedback@praisecharts.com

www.praisecharts.com

Based on the popular recording from the Hosanna! Music album
“Alive Forever” featuring Travis Cottrell

The **PraiseCharts Worship Band Series** is a unique and growing series of arrangements by some of today's top new arrangers. It is geared towards a contemporary “R&B horns” praise band sound while at the same time being scalable up to a medium-sized church orchestra. The core parts (rhythm, vocals, and brass) may be enhanced with the other parts in any combination. The layout and look was very carefully chosen to provide a fresh and relaxed, yet professional look for the player.

Rhythm section: The **Rhythm** part is for the section player (pianist, guitarist, or drummer) with all the specific rhythms and chords necessary for the arrangement. The **Lead Sheet** is a combination rhythm and vocal chart meant for the vocalists, worship leader, or rhythm player needing more vocal cues. **Piano, Vocal** includes a full piano part in “songbook format” for those not comfortable with playing from a chord chart. When playing with a complete band the pianist might simplify this part in order to “stay out of the way”.

Vocals: The vocal arrangement should be sung as **SAT** (Soprano, Alto, Tenor) with the baritone/basses singing the melody (soprano) down an octave – any exceptions are listed on the score. When the part is written in unison, the men should sing it down one octave or it may be done as a solo. This method provides a contemporary sound in an easy-to-learn fashion.

Alternate keys: There is one alternate key included to accommodate either a keyboard-based band or a guitar-based band, to give the orchestra a more playable key, or to make the vocal range a little more accessible if necessary.

Other notes: Rehearsal numbers are given in the form of “1”, “2”, and “3”, providing the easy use of finger signals by the worship leader who may want to make impromptu changes during worship. Normally, “1” is the verse of the song, “2” is the chorus, and “3” is a bridge or other section, but there are exceptions. When a section is repeated in its entirety later in the arrangement, it is labeled “1a” or “2a”, etc. All endings and repeats are clearly notated to facilitate these impromptu changes. Finally, each instrumental part includes lyric cues to aid the player in keeping their place.

Parts included in the **PraiseCharts Worship Band Series**

Lead Sheet – for worship leader and vocalists **Piano/Vocal** – includes written-out piano part and vocals

Rhythm – more detailed chart for keyboard, guitars, and drums.

Ac. Guitar – modified Rhythm part in appropriate capo keys

Core Worship Band instrumental parts (written as a section):

Trumpet 1-2

Alto Sax

Trombone 1-2

Trumpet 3 (doubles Alto Sax)

Tenor Sax 1-2 (doubles Trombone)

Brass stylings: For most titles, the brass parts should be interpreted with jazz articulations and stylings in mind. They have been notated very carefully to aid the player in this interpretation.

Additional Orchestral parts (these enhance the arrangement, but the Worship Band parts may also stand alone):

Written with core brass

Bass Trombone/Tuba

Bari Sax (doubles Bass Trombone)

Written as a section

Horn 1-2 (French Horn)

Written as a section

Flute/Oboe 1-3

Clarinet (doubles 3rd Flute)

Strings (Synth) - may be played by a synth or by a full string section (Violin/Viola on top staff, Cello/Bass on bottom staff)

Percussion (Timpani, Bells, Sus. Cymbal, etc)

Friend of God

(based on the recording from the Hosanna! Music album "Alive Forever" with Travis Cottrell)

Israel Houghton and Michael Gungor

Arr. by Ed Hogan

With motion ♩ = 120

Low-resolution Preview (not for print)

The publish-quality version of this chart is available for purchase at www.praisecharts.com.

1 - to Chorus 1

2

1 - W. L. only
2x - All

C Synth. pad **Am⁷**

Ac. Gtr., strummed
Drum loop

Dm⁷

5

9 **1** **C** Who am I that You are mind - ful of me, that You hear.

13 **Dm⁷** **C** me when I call;

17 **Melody top note** **Am⁷** Is it true that You are think - ing of me; How You love.

21 **Dm⁷** **B^b7** me, ing.

25 **C** **Am⁷** I am a friend of God; I am a friend of God;

29 Dm^7 C
I am a friend of God; He calls me friend;

33 Am^7
I am a friend of God; I am a friend of God;

37 Dm^7 C to 1
I am a friend of God; He calls me friend.

41 2 - to Chorus 2 Dm^7 Bb^2
It's a - maz - ing; It's a - maz - ing.

45 2a C Am^7
I am a friend of God; I am a friend of God;

49 Dm^7 C 1 - Repeat to Chorus to 2a
I am a friend of God; He calls me friend;

54 2 - to Bridge Dm^7 F^2 C^2 E
He calls me friend.

58 Dm^7 F

Low-resolution preview (not for print)

The publish-quality version of this chart is available for purchase at www.praisecharts.com

63 **3** Fma⁷ 1x - Mel. only (top note)
2x - Parts C²
E

God Al - might - y, Lord of Glo - ry,

67 Dm⁷ F²

You have called me friend.

71 F² Mel. middle note C²
E

God Al - might - y, Lord of Glo - ry,

75 Dm⁷ 1 F²

You have called me friend.

79 2 Dm⁷ Gsus 2b C (Mel. on top)

called me friend. I am a friend of God;

83 Am⁷ Dm⁷

I am a friend of God; I am a friend of God;

Praise Team

I am a friend of God; I am a friend of God;

87 1,2 C to 2b 3 Dm⁷

You call me friend. You call me friend.

91 Bb² Gm⁷ C

You call me friend.

**Low-resolution
Preview
(not for print)**

**The publish-quality version
of this chart is available for purchase at
www.praisecharts.com**

Friend of God

(based on the recording from the Hosanna! Music album "Alive Forever" with Travis Cottrell)

Israel Houghton and Michael Gungor
Arr. by Ed Hogan

With motion $\text{♩} = 120$
C

Am⁷

5 Dm⁷

Low-resolution
Preview
(not for print)

1 1x - W. L. only
2x - All

Who am I that You are mind - ful of me, that You hear

C

Am⁷

13 me

Dm⁷

The publish-quality version

of this chart is available for purchase at

www.praisecharts.com

17 *Melody top note*

Is it true that You are think - ing of me; How You love

Am7

21 *1 - to Chorus 1*

me, it's a-maz - ing.

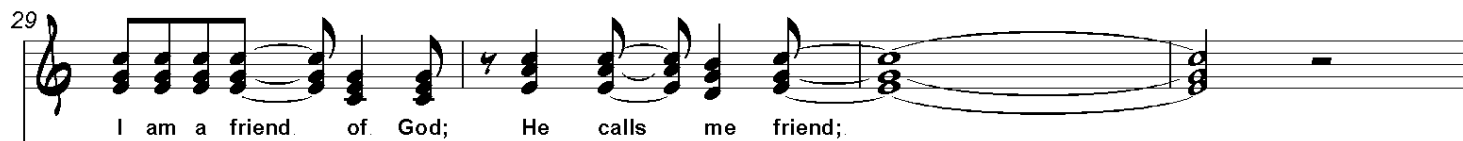
Dm7 Bb2

2

I am a friend of God; I am a friend of God;

C Am7

The publish-quality version
of this chart is available for purchase at
www.praisecharts.com



The publish-quality version
of this chart is available for purchase at
www.praisecharts.com

Friend of God

(based on the recording from the Hosanna! Music album "Alive Forever" with Travis Cottrell)

Israel Houghton and Michael Gungor
Arr. by Ed Hogan

With motion ♩ = 120

C Synth. pad **Am⁷**

Dm⁷ **C**

1 "Who am I that You are mindful..." **Am⁷**

2nd X: Full Band keep on cookin' **1st X: + Drums and Bass, 4 beat Kick, Snare on 4 Elec. Gtr. diamonds, Little Pno. fills**

Dm⁷ **C**

18 **Am⁷** **Dm⁷** **1 - to Chorus 1**

23 **B^b2** **Drum fill** **2** "I am a friend of God..." **C** **Am⁷**

28 **Dm⁷** **C** **Drum fill**

33 **Am⁷** **Dm⁷**

38 **C** **to 1** **2 - to Chorus 2** **Dm⁷** **Drum fill** **B^b2**

Ac. Gtr., strummed
Drum loop

Driving Rock
Snare on 2 and 4

The publish-quality version of this chart is available for purchase at www.praisecharts.com

43 *Drum fill* **2a** "I am a friend of God..." C

48 Am⁷ Dm⁷ 1 - Repeat to Chorus C to 2a

54 2 - to Bridge Dm⁷ *Drum fill* F² C² E Dm⁷

60 F Fma⁷ "God Almighty..." C² E

66 Dm⁷ F²

71 "God Almighty..." F² C² E Dm⁷

1st X: Drums, resume 4 kick time
everybody else, building
2nd X: Growing even more
Elec. Gtr. power chords

76 1 F² *Drum fill* 2 Dm⁷ Gsus *Drum fill*

82 **2b** "I am a friend of God..." C Am⁷ Dm⁷ 1,2 C

Big rock feel Snare on 2 and 4

89 to 2b 3 Dm⁷ Bb² Gm⁷ C

Low-resolution Preview (not for print)

The publish-quality version of this chart is available for purchase at www.praisecharts.com

Friend of God

(based on the recording from the Hosanna! Music album "Alive Forever" with Travis Cottrell)

Israel Houghton and Michael Gungor

Arr. by Ed Hogan

1 "Who am I that You are mindful..."
2nd X only

20 1 - to Chorus 1

25 2 "I am a friend of God..."

29

33

37 to 1

41 2 - to Chorus 2

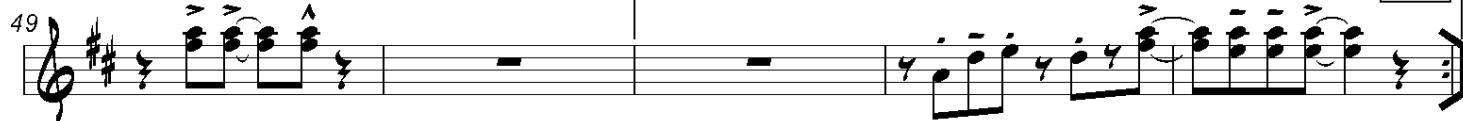
45 2a "I am a friend of God..."

**Low-resolution
Preview
(not for print)**

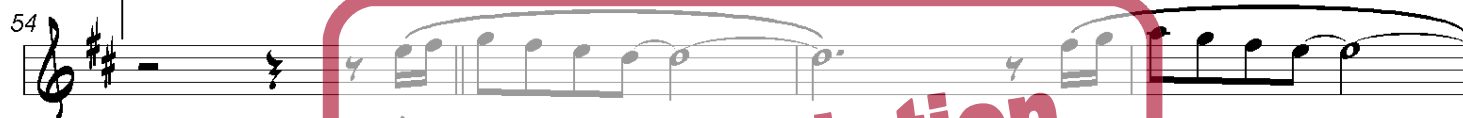
**The publish-quality version
of this chart is available for purchase at
www.praisecharts.com**

1 - Repeat to Chorus

to 2a



2 - to Bridge



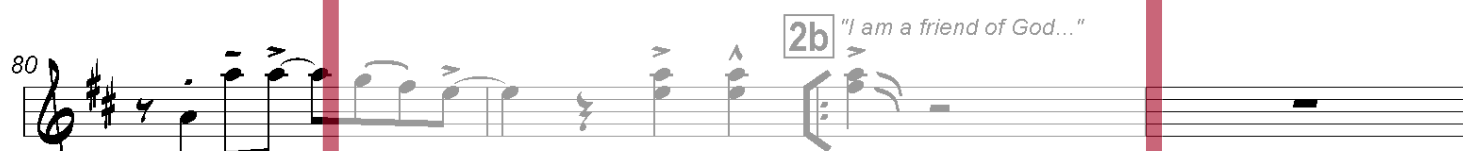
3 "God Almighty..." "God Almighty..."



1



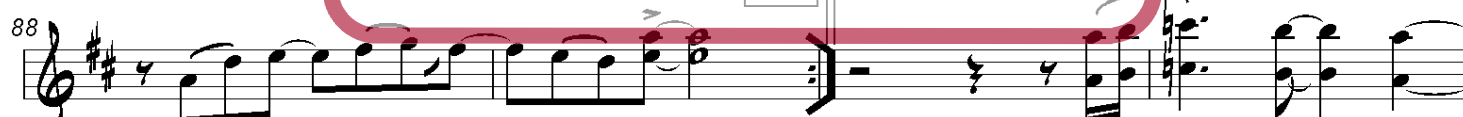
2



2b "I am a friend of God..."



1, 2



to 2b



The publish-quality version
of this chart is available for purchase at
www.praisecharts.com

Strings (Synth)

PraiseCharts Worship Band Series

Key: C

Friend of God

(based on the recording from the Hosanna! Music album "Alive Forever" with Travis Cottrell)

Israel Houghton and Michael Gungor

Arr. by Ed Hogan

Violin-Viola

Cello-Bass

5

1 - to Chorus 1

22

2 "I am a friend of God..."

27

- Str. Bass

+ Str. Bass

1 "Who am I..."

13

13

Low-resolution Preview (not for print)

The publish-quality version of this chart is available for purchase at www.praisecharts.com

32

37

42

47

52

Low-resolution
Preview
(not for print)

to 1 2 - to Chorus 2

2a "I am a friend of God..."

1 - Repeat to Chorus

to 2a 2 - to Bridge

The publish-quality version
of this chart is available for purchase at
www.praisecharts.com

57

62

3 "God Almighty..."

mp 2nd X only

67

71 "God Almighty..."

mp

76

1 2

**Low-resolution
Preview
(not for print)**

**The publish-quality version
of this chart is available for purchase at
www.praisecharts.com**

82 **2b** "I am a friend of God..."

87 1,2 to 2b 3

92

The image shows a musical score for strings (synth) for the song 'Friend of God'. The score is written for two staves, treble and bass clef. It includes measures 82, 87, and 92. Measure 82 is marked with a '2b' and the lyrics 'I am a friend of God...'. Measure 87 is marked with '1,2' and 'to 2b 3'. Measure 92 is marked with '92'. The score is overlaid with a large red watermark that reads 'Low-resolution Preview (not for print)'. The watermark is contained within a red rounded rectangle.

The publish-quality version
of this chart is available for purchase at
www.praisecharts.com

Friend of God

(based on the recording from the Hosanna! Music album "Alive Forever" with Travis Cottrell)

Israel Houghton and Michael Gungor
Arr. by Ed Hogan

With motion ♩ = 120

Low-resolution Preview (not for print)

The publish-quality version of this chart is available for purchase at www.praisecharts.com

Lead Sheet

4/4 Synth. pad
Ac. Gtr., strummed
Drum loop

Piano

4/4 m²

Rhythm

4/4 Synth. pad
Ac. Gtr., strummed
Drum loop

Trumpet 1-2

4/4

Alto Sax (Trumpet 3)

4/4

Trombone 1-2 (Tenor Sax 1-2)

4/4

Trombone 3, Tuba (Bar Sax)

4/4

Percussion

4/4 m² Loose ethnic shaker
Opt. loop

Horn 1-2

4/4

Flute (Oboe) 1-3 (Clarinet)

4/4

Violin-Viola

4/4

Strings (Synth)

4/4

Cello-Bass

4/4

Low-resolution Preview (not for print)

The publish-quality version of this chart is available for purchase at www.praisecharts.com

Chord Progression: Dm⁷ C

Instrumentation: Ld. Sheet, Piano, Rhy., Tpt. 1-2, Alto Sax (Tpt 3), Trb. 1-2 (T. Sax 1-2), Trb. 3, Tba. (Bari Sax), Perc., Horn 1-2, Fl. (Ob.) 1-3 (Clarinet), Vln-Vla, Strings (Syn.), Cello-Bass.

Measure Numbers: 5, 6, 7, 8

Chord Progression: Dm⁷ C

Instrumentation: Ld. Sheet, Piano, Rhy., Tpt. 1-2, Alto Sax (Tpt 3), Trb. 1-2 (T. Sax 1-2), Trb. 3, Tba. (Bari Sax), Perc., Horn 1-2, Fl. (Ob.) 1-3 (Clarinet), Vln-Vla, Strings (Syn.), Cello-Bass.

Measure Numbers: 5, 6, 7, 8

1 C 1x - W. L. only
2x - All Am7

Ld. Sheet

Who am I that You are mind - ful of me, that You hear

Piano

Rhy. C Am7

2nd X: Full Band keep on cookin' 9 10 11 12

1st X: + Drums and Bass, 4 beat Kick, Snare on 4 Elec. Gtr. diamonds, Little Pno. fills

"Who am I that You are mindful..."

Tpt. 1-2

Alto Sax (Tpt 3)

Trb. 1-2 (T. Sax 1-2)

Trb. 3, Tba. (Bari Sax)

Perc. 2nd X: Return to shaker

Horn 1-2

Fl. (Ob.) 1-3 (Clarinet)

Vln-Vla

Strings (Syn.)

Cello-Bass

Low-resolution Preview (not for print)

The publish-quality version of this chart is available for purchase at www.praisecharts.com

Low-resolution Preview (not for print)

The publish-quality version of this chart is available for purchase at www.praisecharts.com

Instrumentation:

- Ld. Sheet
- Piano
- Rhy.
- Tpt. 1-2
- Alto Sax (Tpt 3)
- Trb. 1-2 (T. Sax 1-2)
- Trb. 3, Tba. (Bari Sax)
- Perc.
- Horn 1-2
- Fl. (Ob.) 1-3 (Clarinet)
- Vln-Vla
- Strings (Syn.)
- Cello-Bass

Chords: Dm⁷, C

Lyrics: me when I call;

Measure Numbers: 13, 14, 15, 16

Melody top note Am⁷

Ld. Sheet

Is it true that You are think - ing of me; How You love

Piano

Rhy.

17 18 19 20

Tpt. 1-2

2nd X only

Alto Sax
(Tpt. 3)

2nd X only

Trb. 1-2
(T. Sax 1-2)

2nd X only

Trb. 3, Tba.
(Bari Sax)

Perc.

Horn 1-2

Fl. (Ob.) 1-3
(Clarinet)

Vln-Vla

Strings (Syn.)

Cello-Bass

**Low-resolution
Preview
(not for print)**

**The publish-quality version
of this chart is available for purchase at
www.praisecharts.com**

Low-resolution Preview (not for print)

The publish-quality version of this chart is available for purchase at www.praisecharts.com

1 - to Chorus 1

All

B \flat 2

me,

it's a - maz - - - ing.

Drum fill

21 22 23 24

Ld. Sheet

Piano

Rhy.

Tpt. 1-2

Alto Sax (Tpt 3)

Trb. 1-2 (T. Sax 1-2)

Trb. 3, Tba. (Bari Sax)

Perc.

Horn 1-2

Fl. (Ob.) 1-3 (Clarinet)

Vln-Vla

Strings (Syn.)

Cello-Bass

- Str. Bass