



Integrity
Stock #

24375

Open the Eyes of My Heart

Words & music by Paul Baloche

Arranged for by David Shipps

Based on the popular recording from the
Paul Baloche/Hosanna! Music album "Because We Believe"



This
arrangement
has been
created to
synchronize
with the
Integrity
iWorship
DVD series.

DVD A
Song #3

The **PraiseCharts Worship Band Series** is a unique and growing series of arrangements by some of today's top arrangers geared towards a contemporary "R&B horns" praise band sound while at the same time being scalable to a medium-sized church orchestra. The core parts (rhythm, vocals, and brass) may be enhanced with the other parts in any combination. The layout and look was very carefully chosen to provide a fresh and relaxed, yet professional look for the player.

Rhythm section: Two rhythm parts are included: One for the section player (pianist, guitarist, or drummer) with all the specific rhythms and chords necessary for the arrangement. The other is a combination rhythm/vocal chart meant for the vocalists and the worship leader. There is a written-out piano part for those not comfortable with playing from a chord chart. It is written to stand alone, so when playing with a complete band the pianist might simplify this part a little to "stay out of the way".

Vocals: The vocal arrangement should be sung as **SAT** (Soprano, Alto, Tenor) with the baritone/basses singing the melody (soprano) down an octave – any exceptions are listed on the score. When the melody is written in unison, the men should sing the melody down one octave or it may be done as a solo. This method provides a contemporary sound in an easy-to-learn fashion.

Alternate keys: There is one alternate key included to accommodate a "keyboard" band vs. a "guitar" band, to give the orchestra a more playable key, or to make the vocal range a little more accessible if necessary.

Other notes: Rehearsal numbers are given in the form of "1", "2", and "3", providing the easy use of finger signals by the worship leader who may want to do impromptu changes during worship. Normally, "1" is the verse of the song, "2" is the chorus, and "3" is a bridge or other section, but there are exceptions. All endings and repeats are clearly notated to facilitate these impromptu changes. Each instrumental part also has lyric cues to aid the player in keeping their place.

Parts included in the PraiseCharts Worship Band Series

Lead Sheet – for worship leader and vocalists

Piano/Vocal – includes written-out piano part and vocals

Rhythm – more detailed chart for keyboard, guitars, and drums.

Core Worship Band instrumental parts (written as a section):

Trumpet 1-2

Alto Sax

Trombone 1-2

Trumpet 3 (doubles Alto Sax)

Tenor Sax 1-2 (doubles Trombone)

Brass stylings: For most titles, the brass parts should be interpreted with jazz articulations and stylings in mind. They have been notated very carefully to aid the player in this interpretation.

Additional Orchestral parts (these enhance the arrangement, but the Worship Band parts may also stand alone):

Written with core brass

Bass Trombone/Tuba

Bari Sax (doubles Bass Trombone)

Written as a section

Horn 1-2 (French Horn)

Written as a section

Flute/Oboe 1-3

Clarinet (doubles 3rd Flute)

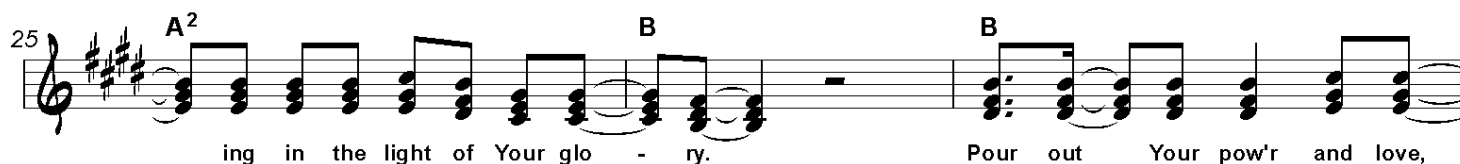
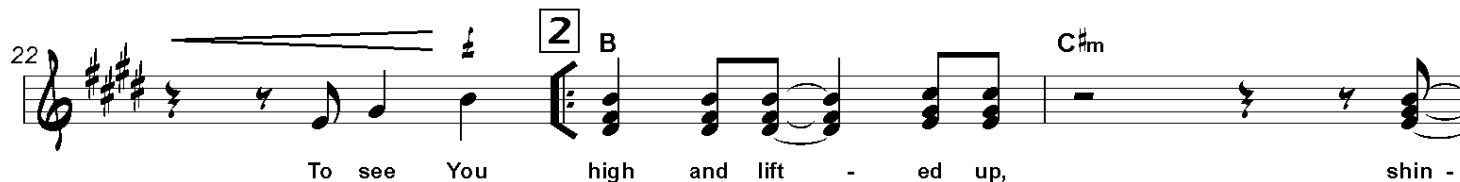
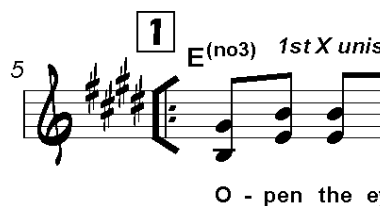
Synth (Strings) - may be played by a synth or by a full string section (Violin/Viola on top staff, Cello/DB on bottom staff)

Percussion (Timpani, Bells, Sus. Cymbal, etc)

Open the Eyes of My Heart

Paul Baloche
Arr. by David Shipps

Easy Acoustic Rock ♩ = 108
iWORSHIP™ count-in: 8 beats



Lead Sheet

Open the Eyes of My Heart - page 2

Key - E

The image displays a preview of a musical score for the hymn "Open the Eyes of My Heart". The score is written for a piano and voice, featuring a key signature of three sharps (F#, C#, G#) and a 4/4 time signature. The music is divided into several systems, each with a measure number and a key signature change. The lyrics are written below the vocal line. A large, red, diagonal watermark reading "LOW RESOLUTION PREVIEW" is overlaid on the center of the image. The score includes various musical notations such as chords (C#m, F#m, Bsus, E(no3), D#, A2), dynamics (p, f), and articulation marks (accents, slurs). The lyrics are: "as we s", "ly", "ly", "Lord.", "Ho - ly, ho", "O - pen the eyes of my heart. I want to see You.", "ly. I want to see You.", "I want to see You.", "(Sing parts 1st X)", "Ho - ly, ho - ly, ho - ly.", "Ho - ly, ho - ly, ho -", "O - pen the eyes of my heart, Lord.", "O - pen the eyes of my heart."

Lead Sheet

Open the Eyes of My Heart - page 3

Key - E

45

ly. I want to

48

E(no3)

see You.

see You.

Tag

51

E(no3)

Ho - ly, ho

O - pen the eyes of my heart, Lord.

54

ly. Ho - ly, ho - ly, ho - ly. I want to

I want to see You. I want to

57

E(no3)

see You.

see You.

Ho - ly, ho - ly, ho - ly.

O - pen the eyes of my heart, Lord.

Lead Sheet

[illegible]

Open the Eyes of My Heart

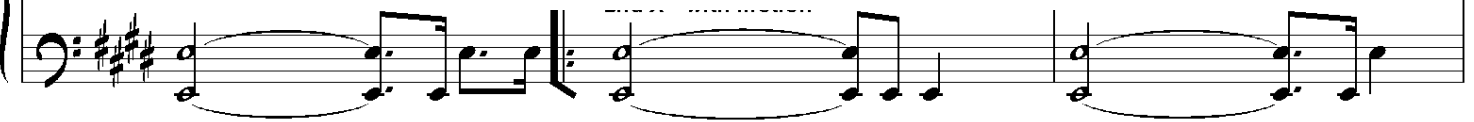
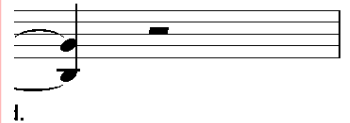
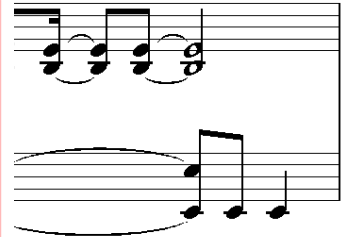
Paul Baloche
Arr. by David Shipps

Easy Acoustic Rock | - 108

WORSHIP™ count-in: 6

E(no3)

**LOW
RESOLUTION
PREVIEW**



O-pen the eyes of my heart.

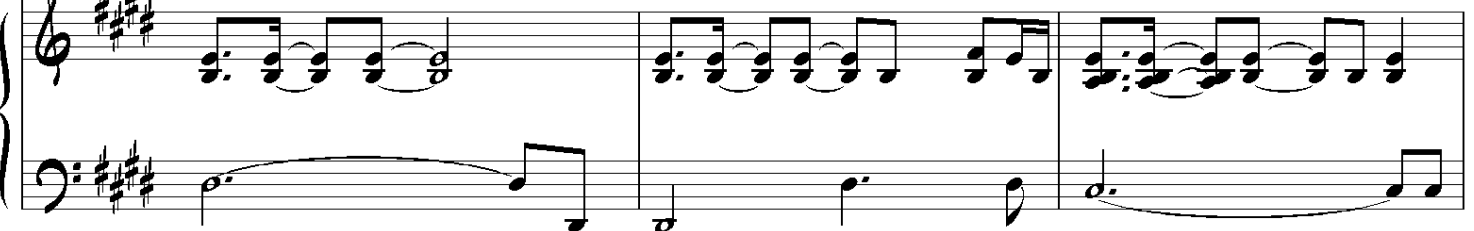
I want to see You.

E(no3)

D#

A²

C#



**LOW
RESOLUTION
PREVIEW**



13

O - pen the eyes

the eyes of my heart.

E(no3)

16

I want to see You.

I want to

A² C#

A²

19 *1 - Repeat to Verse* **to 1** *2, 3 - to Chorus*

see Yo You.

E(no3)

22 To se shin -

25 ing in the light of Your glo - ry. Pour out Your pow'r and love,

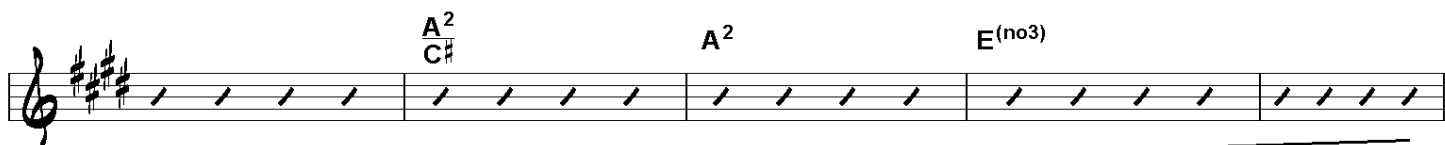
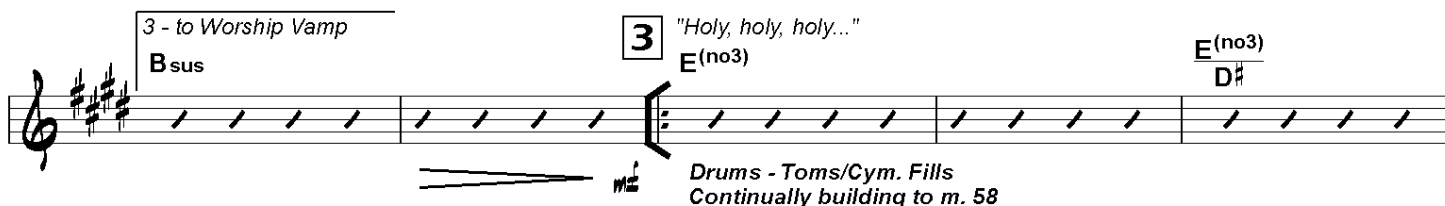
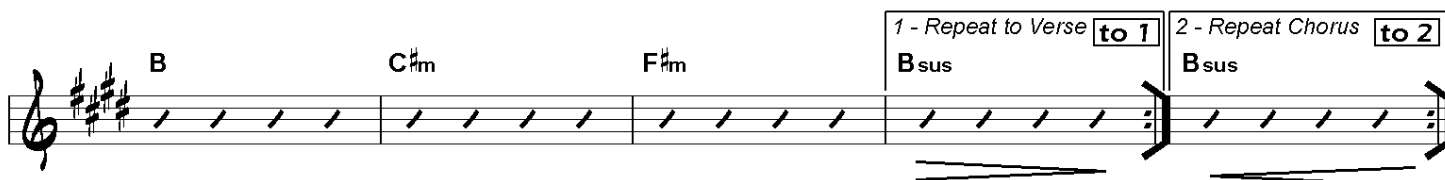
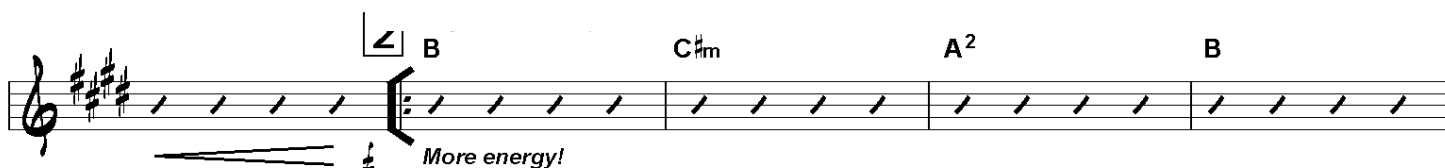
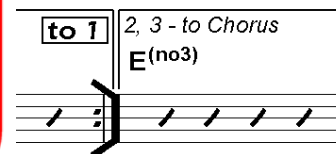
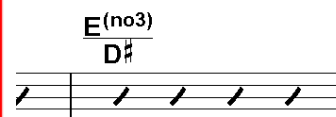
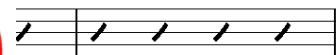
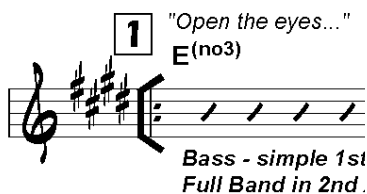
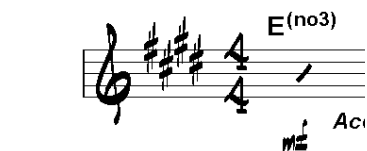
A² B B



Open the Eyes of My Heart

Paul Baloche
Arr. by David Shipps

Easy Acoustic Rock ♩ = 108
WORSHIP™ count-in: 8 beats



E^(no3) E^(no3)
D[#]

Drums - Busy X (2nd X)
Bass - Quarters (2n)

A²
C[#]

2 - to Tag

"Holy, holy, holy..."

E^(no3)

Drums - Toms/Cym. Fills
Bass - Simple

A² A² E^(no3)

Drum fill (Toms) - - - - -

E^(no3) E^(no3) A²
D[#] C[#]

Bass/Keys out

A² E^(no3) A² E^(no3) A² E^(no3)

Ac. Gtr. Lead
Drums - Light Cym. Fills

1 - Repeat

to 3

E^(no3)
D[#]

LOW
RESOLUTION
PREVIEW

Open the Eyes of My Heart

Paul Baloche
Arr. by David Shipps

1 "Open the eyes..."

1 - Repeat to Verse

to 1



2, 3 - to Chorus



2 - to Tag

Tag "Holy, holy, holy..."



"Holy, holy, holy..."



Slowing to the end...

Synth (Strings)

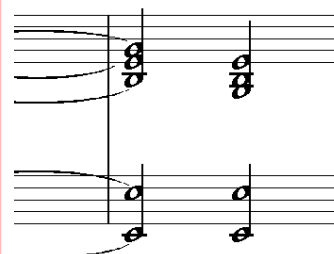
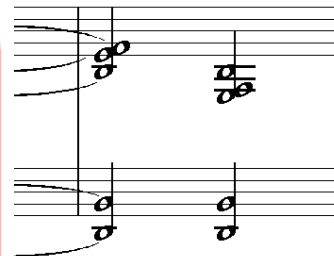
PraiseCharts **WORSHIP** Band Series

Key - E

Open the Eyes of My Heart

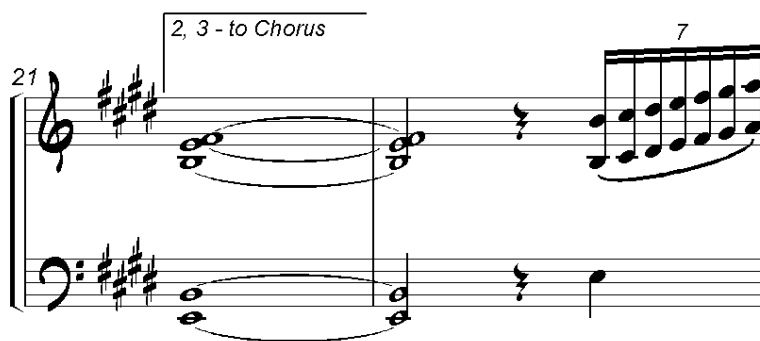
Paul Baloche
Arr. by David Shipps

1 "Open the eyes..."

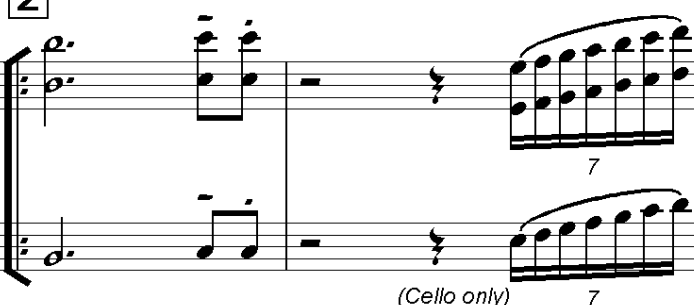


at to Verse

to 1



2 "high and lifted up..."



25  7 2 1 - Repeat to Verse **to 1**

31  2 - Repeat Chorus ; holy..."
y

36  7

42  7

47  7 1 - Repeat **to 3** 2 - to Tag 7
(Cello only) 7

**LOW
RESOLUTION
PREVIEW**

Tag*"Holy, holy, holy..."*

51

57

73

**LOW
RESOLUTION
PREVIEW**

PraiseCharts **WORSHIP** Band Series

Open the Eyes of My Heart

Key - E

Easy Acoustic Rock ♩ = 108
iWORSHIP™ count-in: 8 beats

Paul Baloche
Arr. by David Shipp

Lead Sheet

Piano

Rhythm

Trumpet 1-2

Alto Sax
(Trumpet 3)

Trombone 1-2
(Tenor Sax 1-2)

Trombone 3, Tuba
(Bar Sax)

Percussion

Horn 1-2

Flute (Oboe) 1-3
(Clarinet)

Violin-Viola

Synth (Strings)

Cello-Arco

**LOW
RESOLUTION
PREVIEW**

4

Wind Chimes

1 $E^{(no3)}$ 1st X unis./2nd X parts $E^{(no3)}$ D^\sharp

L. S. O - pen the eyes of my heart, Lord. O - pen the eyes of my heart. I want to

Piano 1st X - more sustained 2nd X - with motion

Rhy. $E^{(no3)}$ $E^{(no3)}$ D^\sharp
Bass - simple 1st X Full Band in 2nd X

5 6 7 8

"Open the eyes..."

Tpt. 1-2

Alto Sax (Tpt. 3)

Trb. 1-2 (T. Sax 1-2)

Trb. 3, Tba. (Bari Sax)

Perc. Shaker Tacet 1st X m^\sharp

Horn 1-2 3rd X only

Fl. (Ob.) 1-3 (Clarinet)

Vln-Vla Tacet 1st X m^\sharp

Synth (Str.)

Cello-Arco

Score for "Open the Eyes of My Heart" - page 3. Key: E major.

Vocalist (L. S.): see You. I want to see You.

Chords: A² C# (measures 9-10), A² (measures 10-11), E (no3) (measures 11-12).

Instrumentation:

- Piano:** Accompanying the vocal melody with chords and arpeggios.
- Rhythm (Rhy.):** Provides a steady beat with eighth notes.
- 9, 10, 11, 12:** Measure numbers indicating the structure of the piece.
- Tpt. 1-2:** Trumpets 1 and 2.
- Alto Sax (Tpt. 3):** Alto Saxophone (Trumpet 3).
- Trb. 1-2 (T. Sax 1-2):** Trombones 1 and 2 (Tenor Sax 1 and 2).
- Trb. 3, Tba. (Bari Sax):** Trombone 3, Tuba (Baritone Sax).
- Perc.:** Percussion.
- Horn 1-2:** Horns 1 and 2.
- Fl. (Ob.) 1-3 (Clarinet):** Flute (Oboe) 1-3 (Clarinet).
- Vln-Vla:** Violins and Violas.
- Synth (Str.):** Synthesizer (Strings).
- Cello-Arco:** Cello and Arco.

3rd X only: A musical notation indicating a specific performance instruction for the Flute/Oboe/Clarinet part.

Score for "Open the Eyes of My Heart" - page 4. Key: E major.

Lyrics:
O - pen the eyes of my heart, Lord. O - pen the eyes of my heart. I want to

Instrumentation:
L. S. (Lead Singer)
Piano
Rhy. (Rhythm)
Tpt. 1-2 (Trumpets 1-2)
Alto Sax (Tpt. 3)
Trb. 1-2 (T. Sax 1-2)
Trb. 3, Tba. (Bari Sax)
Perc. (Percussion)
Horn 1-2
Fl. (Ob.) 1-3 (Clarinet)
Vln-Vla (Violins/Violas)
Synth (Str.) (Synthesizer Strings)
Cello-Arco (Cello/Arco)

Rehearsal Marks:
13
14
15
16

Chord Progression:
E (no3)
D#

Performance Notes:
add Drums - Toms
3rd X only

1 - Repeat to Verse E^(no3) [to 1]

L. S. ^{A²} C# ^{A²} see You. I want to see You.

Piano

Rhy. ^{A²} C# ^{A²} E^(no3)

17 18 19 20

Tpt. 1-2

Alto Sax
(Tpt. 3)

Trb. 1-2
(T. Sax 1-2)

Trb. 3, Tba.
(Bari Sax)

Perc.

Horn 1-2

Fl. (Ob.) 1-3
(Clarinet)

Vln-Vla

Synth (Str.)

Cello-Arco

2nd/3rd X's only

2, 3 - to Chorus
E (no3)

L. S. see You. To see You high and lift - ed up,

Piano

Rhy. E (no3) B More energy!

21 22 23

"high and lifted up..."

Tpt. 1-2

Alto Sax (Tpt. 3)

Trb. 1-2 (T. Sax 1-2)

Trb. 3, Tba. (Bari Sax)

Perc. Tambourine - 16th's

Horn 1-2

Fl. (Ob.) 1-3 (Clarinet)

Vln-Vla

Synth (Str.)

Cello-Arco

7

Sheet music for "Open the Eyes of My Heart" - page 7. The key signature is E major (three sharps: F#, C#, G#).

The score includes parts for the following instruments and vocals:

- L. S. (Lead Singer)
- Piano
- Rhy. (Rhythm)
- Tpt. 1-2 (Trumpets 1-2)
- Alto Sax (Tpt. 3) (Alto Saxophone / Trumpet 3)
- Trb. 1-2 (T. Sax 1-2) (Trombone 1-2 / Tenor Saxophone 1-2)
- Trb. 3, Tba. (Bari Sax) (Trombone 3, Tuba / Baritone Saxophone)
- Perc. (Percussion)
- Horn 1-2 (Horn 1-2)
- Fl. (Ob.) 1-3 (Clarinet) (Flute / Oboe 1-3 / Clarinet)
- Vln-Vla (Violin-Viola)
- Synth (Str.) (Synthesizer / Strings)
- Cello-Arco (Cello only)

The lyrics are: shin - ing in the light of Your glo - ry.

Chord progressions indicated above the L. S. part are: C#m, A², and B.

Measure numbers 24, 25, and 26 are marked above the Tpt. 1-2 part.

Rehearsal marks (7) are present in the Vln-Vla, Synth (Str.), and Cello-Arco parts.

L. S. B C[♯]m F[♯]m
 Pour out Your pow'r and love, as we sing, "Ho - ly, ho - ly, ho -

Piano

Rhy. B C[♯]m F[♯]m

27 28 29

Tpt. 1-2

Alto Sax
(Tpt. 3)

Trb. 1-2
(T. Sax 1-2)

Trb. 3, Tba.
(Bari Sax)

Perc.

Horn 1-2

Fl. (Ob.) 1-3
(Clarinet)

Vln-Vla

Synth (Str.)

Cello-Arco
(add Arco)

1 - Repeat to Verse **to 1** 2 - Repeat Chorus **to 2** 3 - to Worship Vamp

L. S. *ly."* *ly"* *ly"*

Piano

Rhy. *Bsus* *Bsus* *Bsus*

30 31 32 33

Tpt. 1-2

Alto Sax
(Tpt. 3)

Trb. 1-2
(T. Sax 1-2)

Trb. 3, Tba.
(Bari Sax)

Perc. *to Shaker*

Horn 1-2

Fl. (Ob.) 1-3
(Clarinet)

Vln-Vla

Synth (Str.)

Cello-Arco

3 1st X unis./2nd X parts

E (no3)

L. S. Ho - ly, ho - ly, ho - ly. Ho - ly, ho - ly, ho - ly.

E (no3) **D#**

Ld. Sheet

Women Ladies sing 2nd X

O - pen the eyes of my heart, Lord. O - pen the eyes of my heart. I want to

Piano

E (no3) **E (no3)** **D#**

Rhy. Drums - Toms/Cym. Fills Continually building to m. 58

34 35 36 37

"Holy, holy, holy..."

Tpt. 1-2

Alto Sax (Tpt. 3)

Trb. 1-2 (T. Sax 1-2)

Trb. 3, Tba. (Bari Sax)

Perc. Shaker Tacet 1st X

Horn 1-2

Fl. (Ob.) 1-3 (Clarinet)

Vln-Vla

Synth (Str.)

Cello-Arco

2nd X only

L. S. A² C#
 Ho - ly, ho - ly, ho - ly. I want to see You. A² E (no3)

Women
 see You. I want to see You.

Piano

Rhy. A² C# A² E (no3)

38 39 40 41

Tpt. 1-2 2nd X only

Alto Sax (Tpt. 3) 2nd X only

Trb. 1-2 (T. Sax 1-2) 2nd X only

Trb. 3, Tba. (Bari Sax) 2nd X only

Perc.

Horn 1-2 2nd X only

Fl. (Ob.) 1-3 (Clarinets)

Vln-Vla
 Synth (Str.)
 Cello-Arco

E (no3) (Sing parts 1st X) **E (no3) D#**

L. S. Ho - ly, ho - ly, ho - ly. Ho - ly, ho - ly, ho - ly.

Women O - pen the eyes of my heart, Lord. O - pen the eyes of my heart. I want to

Piano

Rhy. **E (no3) D#**
Drums - Busy X (2nd X)
Bass - Quarters (2nd X)

42 43 44 45

Tpt. 1-2

Alto Sax (Tpt. 3)

Trb. 1-2 (T. Sax 1-2)

Trb. 3, Tba. (Bari Sax)

Perc. Shaker enters here 1st X

Horn 1-2

Fl. (Ob.) 1-3 (Clarinets)

Vln-Vla

Synth (Str.)

Cello-Arco

1 - Repeat to 3

L. S. *A² C#* *A²* *E (no3)*
Ho - ly, ho - ly, ho - ly. I want to see You.

Ld. Sheet
Women
see You. I want to see You.

Piano

Rhy. *A² C#* *A²* *E (no3)*

46 47 48 49

Tpt. 1-2

Alto Sax
(Tpt. 3)

Trb. 1-2
(T. Sax 1-2)

Trb. 3, Tba.
(Bari Sax)

Perc.

Horn 1-2

Fl. (Ob.) 1-3
(Clarinete)

Vln-Vla

Synth (Str.)

Cello-Arco

2 - **Tag**

E (no3) **E (no3)** **D#**

L. S. Ho - ly, ho - ly, ho - ly. Ho - ly, ho - ly, ho -

Women O - pen the eyes of my heart, Lord. O - pen the eyes of my heart.

Piano

Rhy. **E (no3)** **E (no3)** **D#**

More Energy - Everybody!

50 51 52 53

"Holy, holy, holy..."

Tpt. 1-2

Alto Sax (Tpt. 3)

Trb. 1-2 (T. Sax 1-2)

Trb. 3, Tba. (Bari Sax)

Perc.

Horn 1-2

Fl. (Ob.) 1-3 (Clarinets)

Vln-Vla

Synth (Str.)

Cello-Arco

(Cello only)

L. S.
 Ld. Sheet
 Women
 Piano
 Rhy.
 Tpt. 1-2
 Alto Sax
 (Tpt. 3)
 Trb. 1-2
 (T. Sax 1-2)
 Trb. 3, Tba.
 (Bari Sax)
 Perc.
 Horn 1-2
 Fl. (Ob.) 1-3
 (Clarinet)
 Vln-Vla
 Synth (Str.)
 Cello-Arco

ly. Ho - ly, ho - ly, ho - ly. I want to see You. I want to see You.

A² C# A² E (no3)

54 55 56 57

L. S.
 Ld. Sheet
 Women
 Piano
 Rhy.
 Tpt. 1-2
 Alto Sax
 (Tpt. 3)
 Trb. 1-2
 (T. Sax 1-2)
 Trb. 3, Tba.
 (Bari Sax)
 Perc.
 Horn 1-2
 Fl. (Ob.) 1-3
 (Clarinet)
 Vln-Vla
 Synth (Str.)
 Cello-Arco

Ho - ly, ho - ly, ho - ly.
 O - pen the eyes of my heart, Lord.
 O - pen the eyes of my heart.

E (no3)
 E (no3)
 D#

E (no3)
 D#

Drums - Toms/Cym. Fills
 Bass - Simple

58 59 60 61

"Holy, holy, holy..."

(add Arco)

L. S.
 Ld. Sheet
 Women
 Piano
 Rhy.
 Tpt. 1-2
 Alto Sax
 (Tpt. 3)
 Trb. 1-2
 (T. Sax 1-2)
 Trb. 3, Tba.
 (Bari Sax)
 Perc.
 Horn 1-2
 Fl. (Ob.) 1-3
 (Clarinets)
 Vln-Vla
 Synth (Str.)
 Cello-Arco

ly.
 Ho - ly, ho - ly, ho - ly.
 I want to see You.
 I want to see You.
 I want to see You.
 I want to see You.

A²
 C#
 A²
 E (no3)

A²
 C#
 A²
 E (no3)

62 63 64 65

Drum fill (Toms) - - - - -

L. S. *mf* *E (no3)*
 Ho - ly, ho - ly, ho - ly. *E (no3)*
D#
 Ho - ly, ho - ly, ho -

Women
 O - pen the eyes of my heart, Lord. O - pen the eyes of my heart.

Piano
mf

Rhy. *E (no3)*
mf *Bass/Keys out* *E (no3)*
D#

66 67 68 69

Tpt. 1-2
 Alto Sax (Tpt. 3)
 Trb. 1-2 (T. Sax 1-2)
 Trb. 3, Tba. (Bari Sax)
 Perc. *Wind Chimes*
mf
 Horn 1-2
 Fl. (Ob.) 1-3 (Clarinet)
 Vln-Vla
 Synth (Str.)
 Cello-Arco

L. S.
 Ld. Sheet
 Women
 Piano
 Rhy.
 Tpt. 1-2
 Alto Sax
 (Tpt. 3)
 Trb. 1-2
 (T. Sax 1-2)
 Trb. 3, Tba.
 (Bari Sax)
 Perc.
 Horn 1-2
 Fl. (Ob.) 1-3
 (Clarinet)
 Vln-Vla
 Synth (Str.)
 Cello-Arco

ly.
 Ho - ly, ho - ly, ho - ly.
 I want to see You.
 I want to see You.
 I want to see You.

A²
 C#
 A²
 E (no3)

70 71 72 73

Sus. Cym.

L. S. *A²* *E(no3)* *A²* *E(no3)*
I want to see You. I want to see You.

Piano

Rhy. *A²* *Slowing to the end...* *E(no3)* *A²* *E(no3)*
Ac. Gtr. Lead
Drums - Light Cym. Fills
74 **75** **76** **77**

Tpt. 1-2 *Slowing to the end...*

Alto Sax
(Tpt. 3)

Trb. 1-2
(T. Sax 1-2)

Trb. 3, Tba.
(Bari Sax) *Slowing to the end...*

Perc. *Wind Chimes*

Horn 1-2

Fl. (Ob.) 1-3
(Clarinet) *Slowing to the end...*

Vln-Vla

Synth (Str.)

Cello-Arco